

VISUAL APPROACH CHART

01 FEB 03

1.03 MOSTAR (LQMO)

APTEL : 156



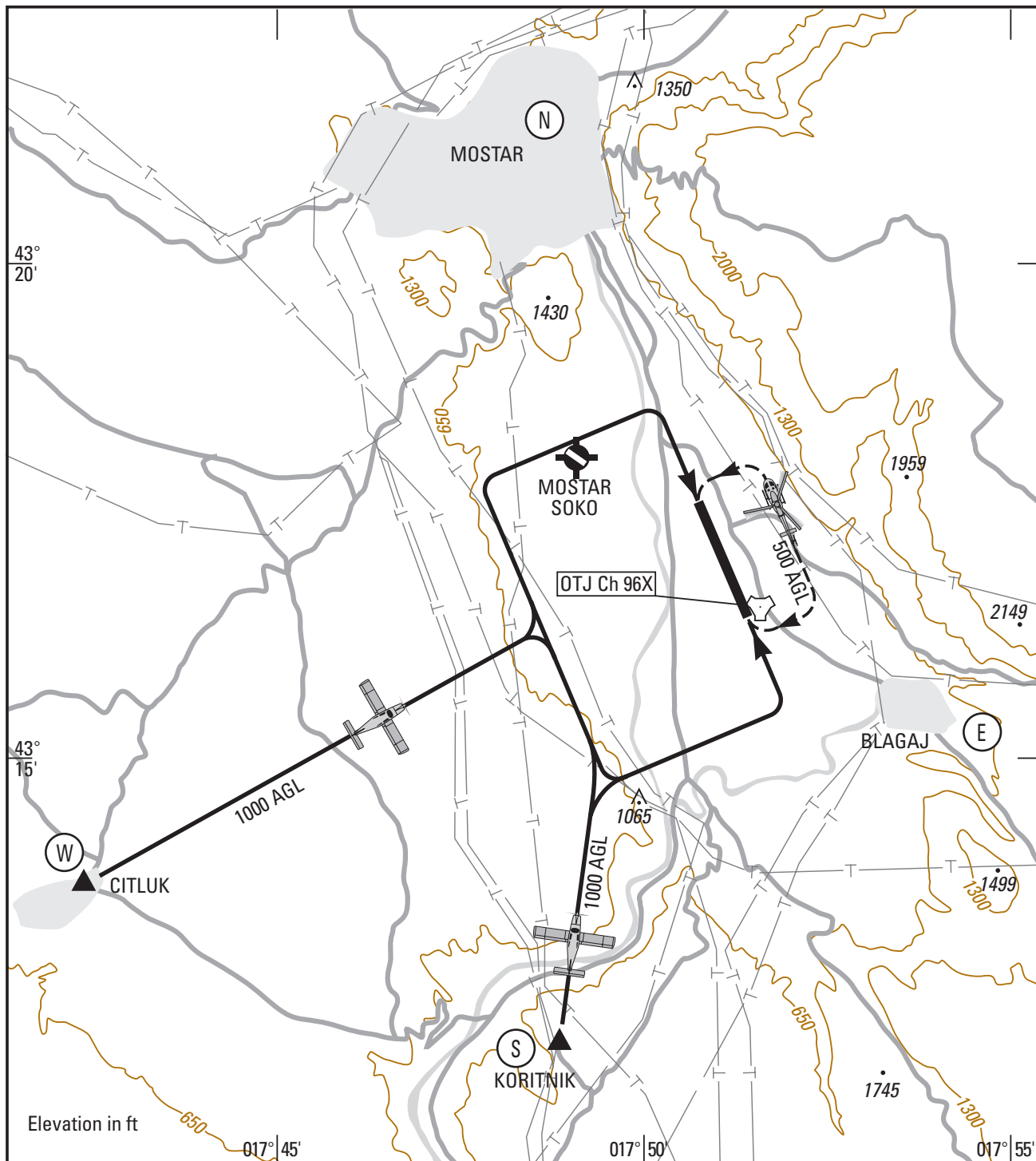
LAT : 43°16'58.44"N

LONG : 017°50'45.16" E

VAR : 2°E (98)

APP : 122.700 119.825 318.200

TWR : 122.350 118.225 257.800 297.900



NOTE :

1. Airfield restricted to authorized aircraft only
- PPR from LQMOZPXZ and RAMCC Vicenza
2. UAV activity broadcasted over radio
3. **ATTENTION : Heavy bird activity near
THLD RWY 16**

SPECIAL VFR MINIMA :

- with IFR traffic : VIS ≥ 3000m (ACFT and HEL)
ceiling ≥ 1000ft
- no IFR traffic : VIS ≥ 1500m (ACFT) 800m (HEL)
out of clouds