

INSTRUMENT APPROACH CHART

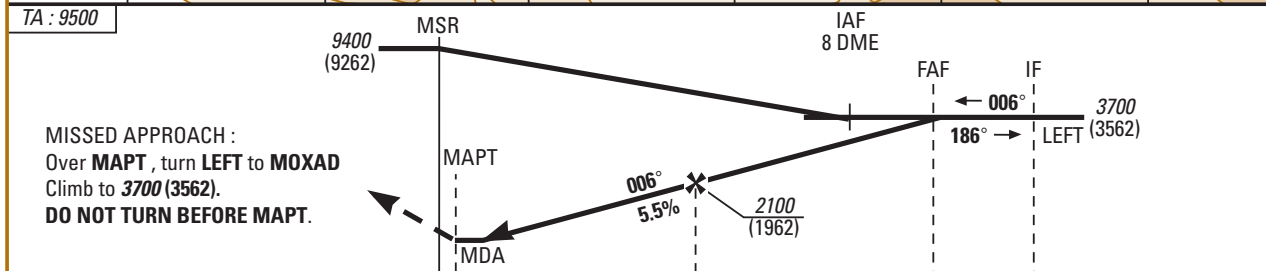
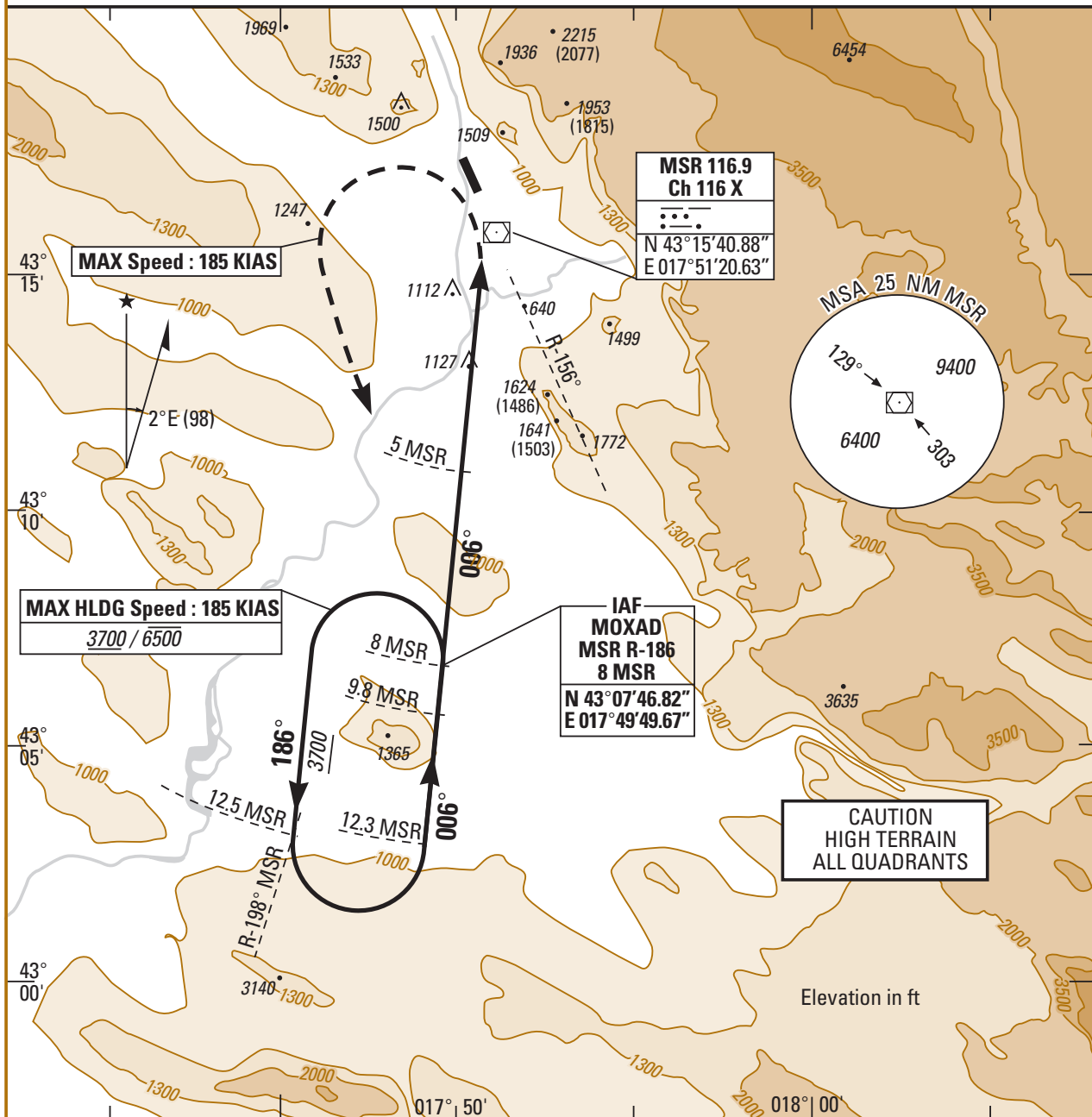
CAT. A B C

APT EL : 156, THR : 138

01 FEB 03

1.08 MOSTAR (LQMO)
VOR/DME-CIRCLING RWY 34

APP : 122.700 119.825 318.200
TWR : 122.350 118.225 257.800 297.900



(DME) ← (NM)	0	0.7	5	9.8	12.3
THR ← (NM)	0.7	1.4	5.7	10.5	13

CATEGORY	A		B		C		*CIRCLING NOT AUTHORIZED EAST OF RWY 16/34 DAY ONLY
	MDA (H)	VIS	MDA (H)	VIS	MDA (H)	VIS	
S-VOR + CIRCLING(*) 34	1780 (1640)	1500	1800 (1660)	1600	1980 (1840)	2400	

DME	9	8	7	6	5
NM	9	8	7	6	5
ALT	3440	3100	2770	2430	2100
(HAUT)	(3302)	(2962)	(2632)	(2292)	(1962)

ICAO - JAR OPS

CHG : Radar monitoring.

VOR/DME-CIRCLING RWY 34©