

STANDARD INSTRUMENT DEPARTURE CHART

CAT. A B C

APT EL : 156

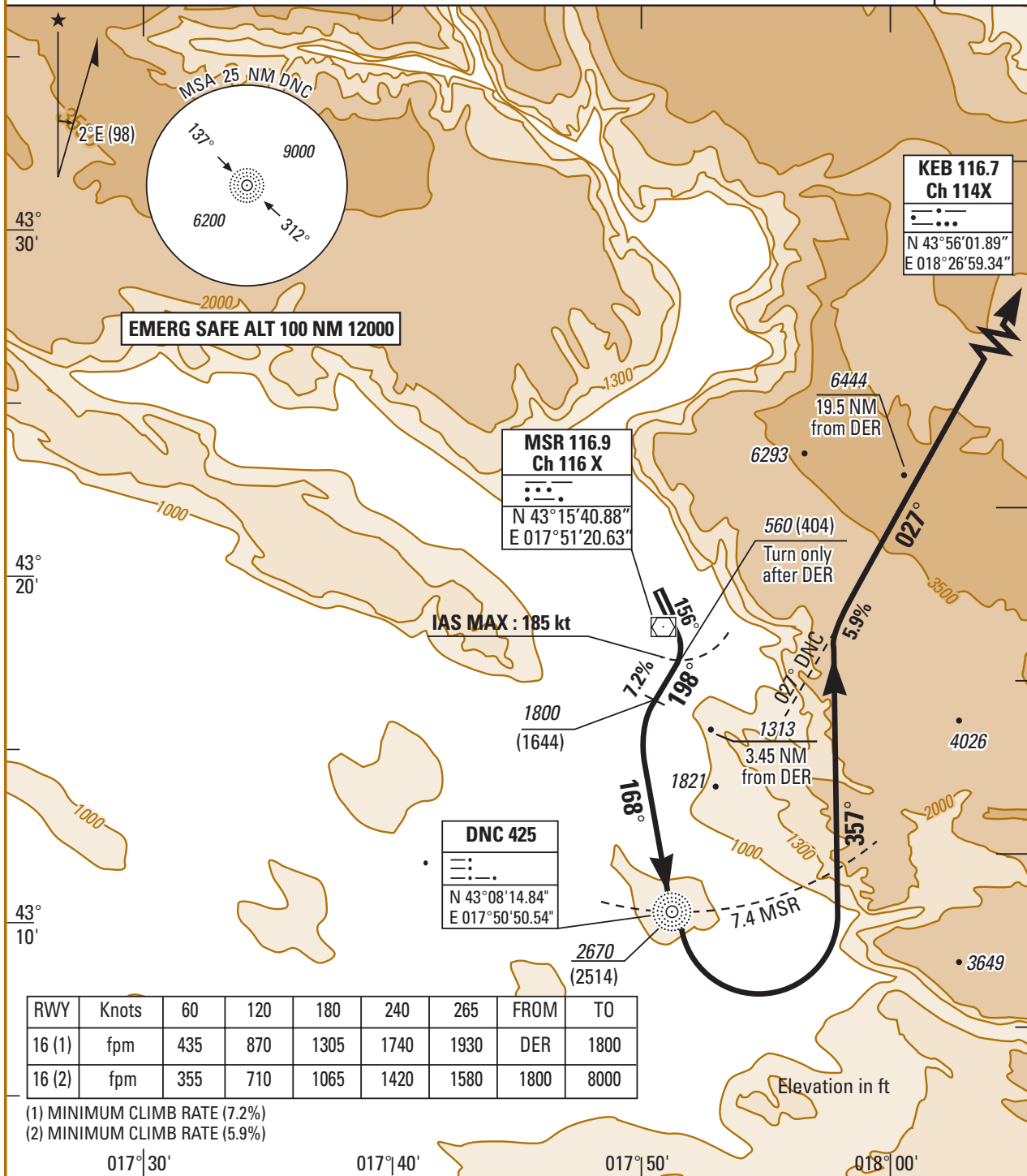
01 FEB 03

1.10 MOSTAR (LQMO)

KEB 1A RWY 16

APP : 122.700 119.825 318.200
TWR : 122.350 118.225 257.800 297.900

TA : 9500



SID RWY 16	DEPARTURE ROUTE DESCRIPTION
KEB 1A	<ul style="list-style-type: none"> - Climb RM 156° (1) - After DER, when passing 560 (404), turn right on track 198°(2) to intercept DNC course 168° inbound - Cross DNC at or above 2670 (2514). Thence turn left on track 357° to intercept DNC course 027° outbound direct KEB. <p>Then as cleared by ATC.</p>

(1) Minimums climb rate : 7.2% from DER to 1800 ft. (2) Minimums climb rate : 5.9% after 1800 until 8000 ft