

STANDARD INSTRUMENT DEPARTURE CHART

CAT. A B C

APT EL : 156

01 FEB 03

1.11 MOSTAR (LQMO)

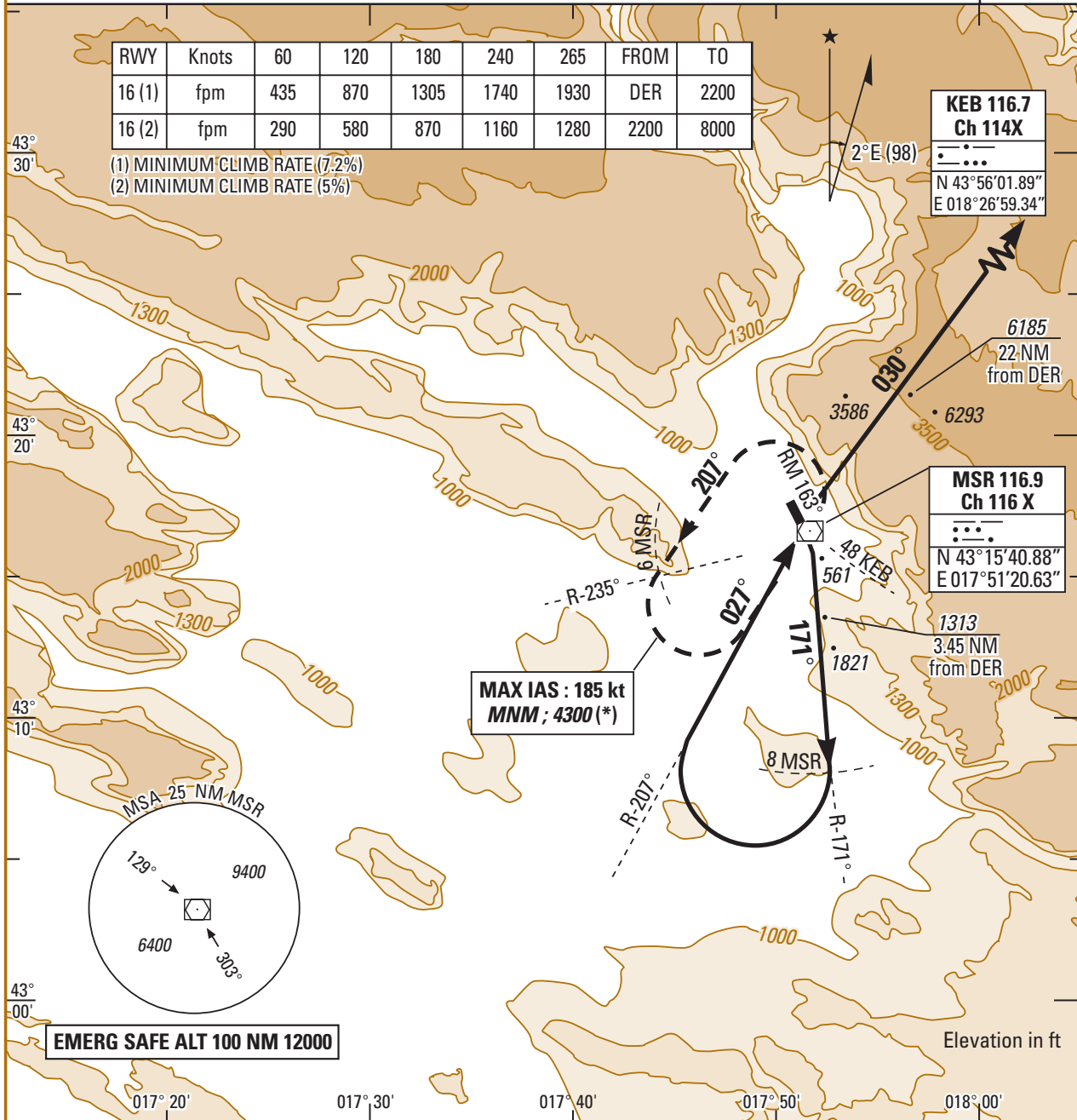
KEB 1B RWY 16

MOSTAR APP 122.700 119.825 318.200
 MOSTAR TWR 122.350 118.225 257.800 297.900

TA : 9500

RWY	Knots	60	120	180	240	265	FROM	TO
16 (1)	fpm	435	870	1305	1740	1930	DER	2200
16 (2)	fpm	290	580	870	1160	1280	2200	8000

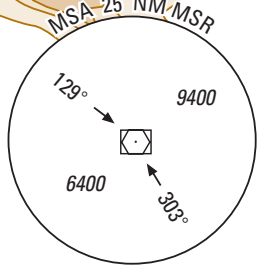
(1) MINIMUM CLIMB RATE (7.2%)
 (2) MINIMUM CLIMB RATE (5%)



KEB 116.7
Ch 114X
 N 43°56'01.89"
 E 018°26'59.34"

MSR 116.9
Ch 116 X
 N 43°15'40.88"
 E 017°51'20.63"

MAX IAS : 185 kt
MNM ; 4300 (*)



EMERG SAFE ALT 100 NM 12000

SID	DEPARTURE ROUTE DESCRIPTION
KEB 1B (RWY 16)	<ul style="list-style-type: none"> - After DER, climb (1) RM 163° then MSR R 171°. - At 8 DME , turn right to intercept R - 207° inbound direct to MSR. - Turn right to intercept R - 030° direct to KEB. - Then as directed by ATC. <p>(1) Minimum climb rate : 7.2% from DER to 2200 ft then 3.4% until 8000 ft (*)</p> <p>(*) Rescue pattern climb : Over 2200 ft, if minimums climb rate not possible above 2200 ft, climb standard rate (3.3%) until MSR, then climb in holding pattern. At 8000 ft direct to KEB. Séparation with arrivals and holdings patterns not guaranteed.</p>