

# STANDARD INSTRUMENT DEPARTURE CHART

CAT. A B C

APTEL : 156

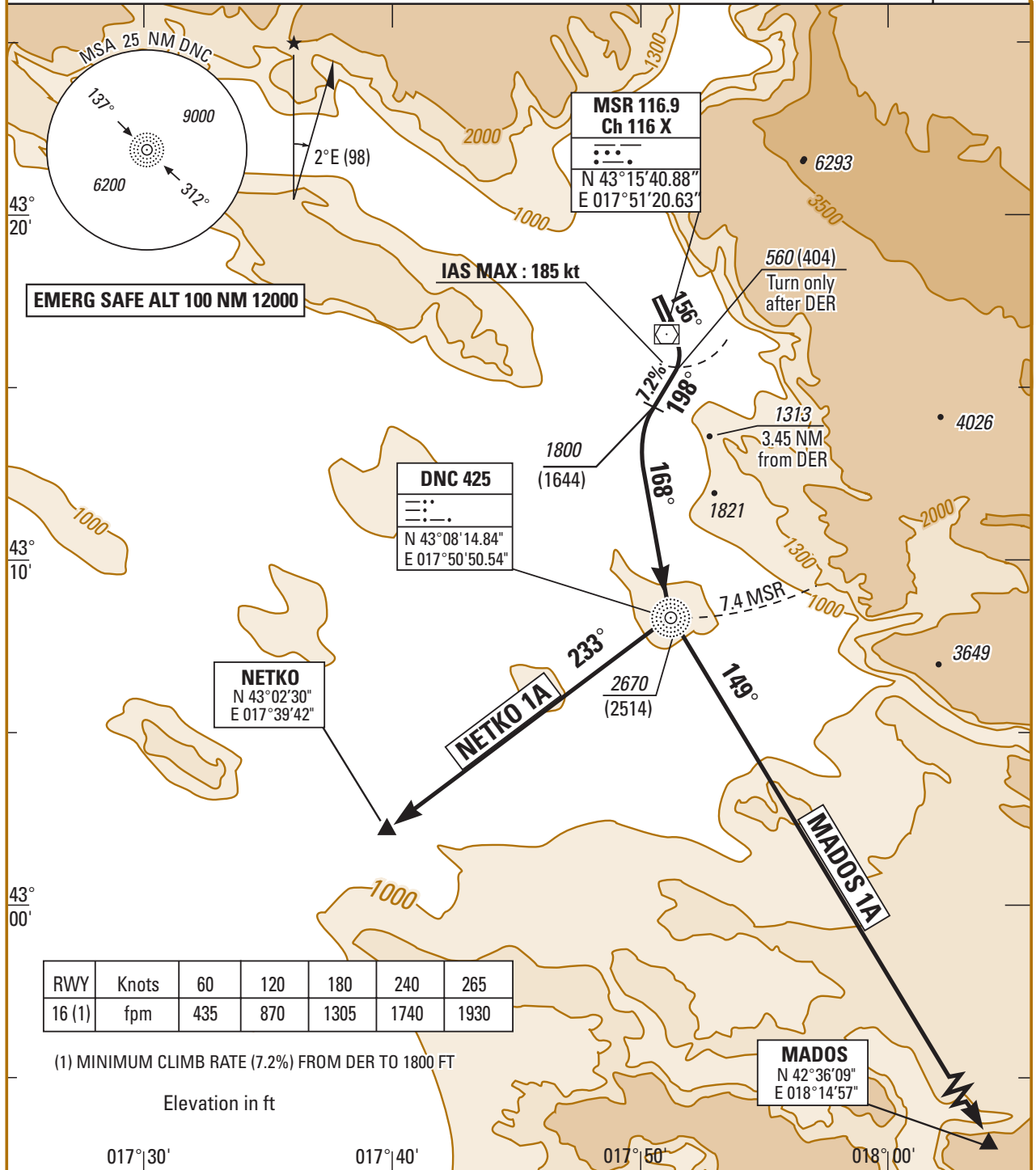
01 FEB 03

1.12 MOSTAR (LQMO)

NETKO 1A / MADOS 1A RWY 16

APP : 122.700 119.825 318.200  
TWR : 122.350 118.225 257.800 297.900

TA : 9500



| SID RWY 16           | DEPARTURE ROUTE DESCRIPTION  |
|----------------------|--|
| NETKO 1A<br>MADOS 1A | - Climb RM 156° (1)<br>- After DER, when passing 560 (404), turn right on track 198°(2) to intercept DNC course 168° inbound<br>- Cross DNC at or above 2670 (2514). Thence... |
| NETKO 1A             | ...turn right on DNC course 233° direct NETKO.<br>Then as cleared by ATC   |
| MADOS 1A             | ...turn left on DNC course 149° outbound direct MADOS.<br>Then as cleared by ATC   |

(1) Minimums climb rate : 7.2% from DER to 1800 ft.