

STANDARD INSTRUMENT DEPARTURE CHART

CAT. A B C

APT EL : 156

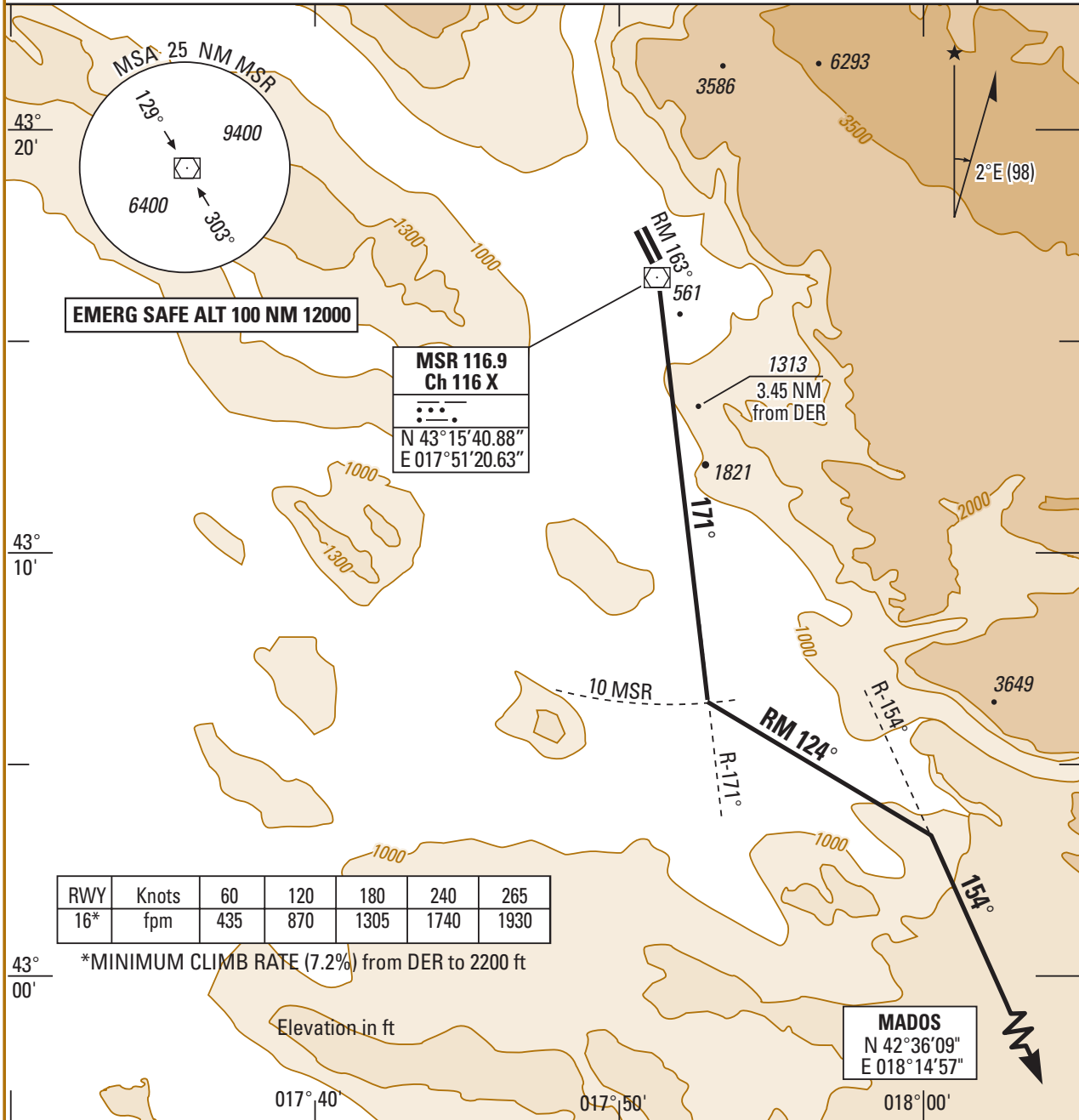
01 FEB 03

1.13 MOSTAR (LQMO)

MADOS 1B RWY 16

APP : 122.700 119.825 318.200
TWR : 122.350 118.225 257.800 297.900

TA : 9500



SID	DEPARTURE ROUTE DESCRIPTION
MADOS 1B (RWY 16)	<ul style="list-style-type: none"> - After DER, climb on RM 163° then MSR R-171°* to 10 DME *Minimums climb rate : 7.2% from DER to 2200 ft - At 10 DME , turn left RM 124° to intercept MSR R - 154° inbound direct to MADOS. - Then as directed by ATC