

STANDARD INSTRUMENT DEPARTURE CHART

CAT. A B C

APTEL : 156

01 FEB 03

1.14 MOSTAR (LQMO)

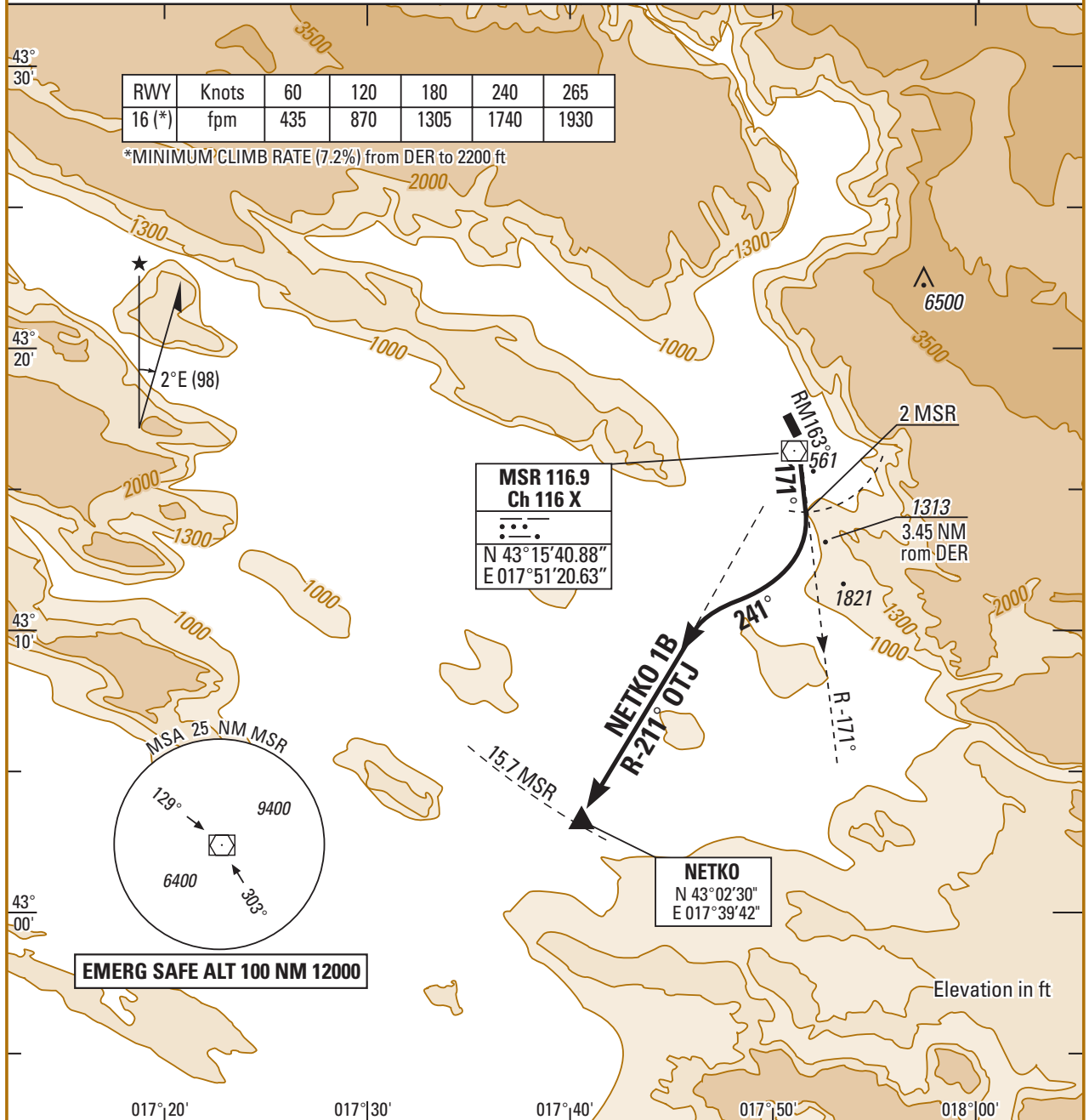
NETKO 1B RWY 16

APP : 122.700 119.825 318.200
TWR : 122.350 118.225 257.800 297.900

TA : 9500

| RWY | Knots | 60 | 120 | 180 | 240 | 265 |
|--------|-------|-----|-----|------|------|------|
| 16 (*) | fpm | 435 | 870 | 1305 | 1740 | 1930 |

*MINIMUM CLIMB RATE (7.2%) from DER to 2200 ft



MSR 116.9
Ch 116 X
N 43° 15' 40.88"
E 017° 51' 20.63"

NETKO
N 43° 02' 30"
E 017° 39' 42"

EMERG SAFE ALT 100 NM 12000

017° 20'

017° 30'

017° 40'

017° 50'

018° 00'

SID

DEPARTURE ROUTE DESCRIPTION

NETKO 1B
(RWY 16)

- After DER, climb RM 163° then MSR R-171 (*)
- (*) Minimum climb rate : 7.2% from DER to 2200 ft
- At 2 DME , turn right on track 241°
- Intercept MSR R - 211° outbound direct to NETKO
- Then as directed by ATC