

# STANDARD INSTRUMENT DEPARTURE CHART

CAT. A B C

APT EL : 156

01 FEB 03

1.16 MOSTAR (LQMO)

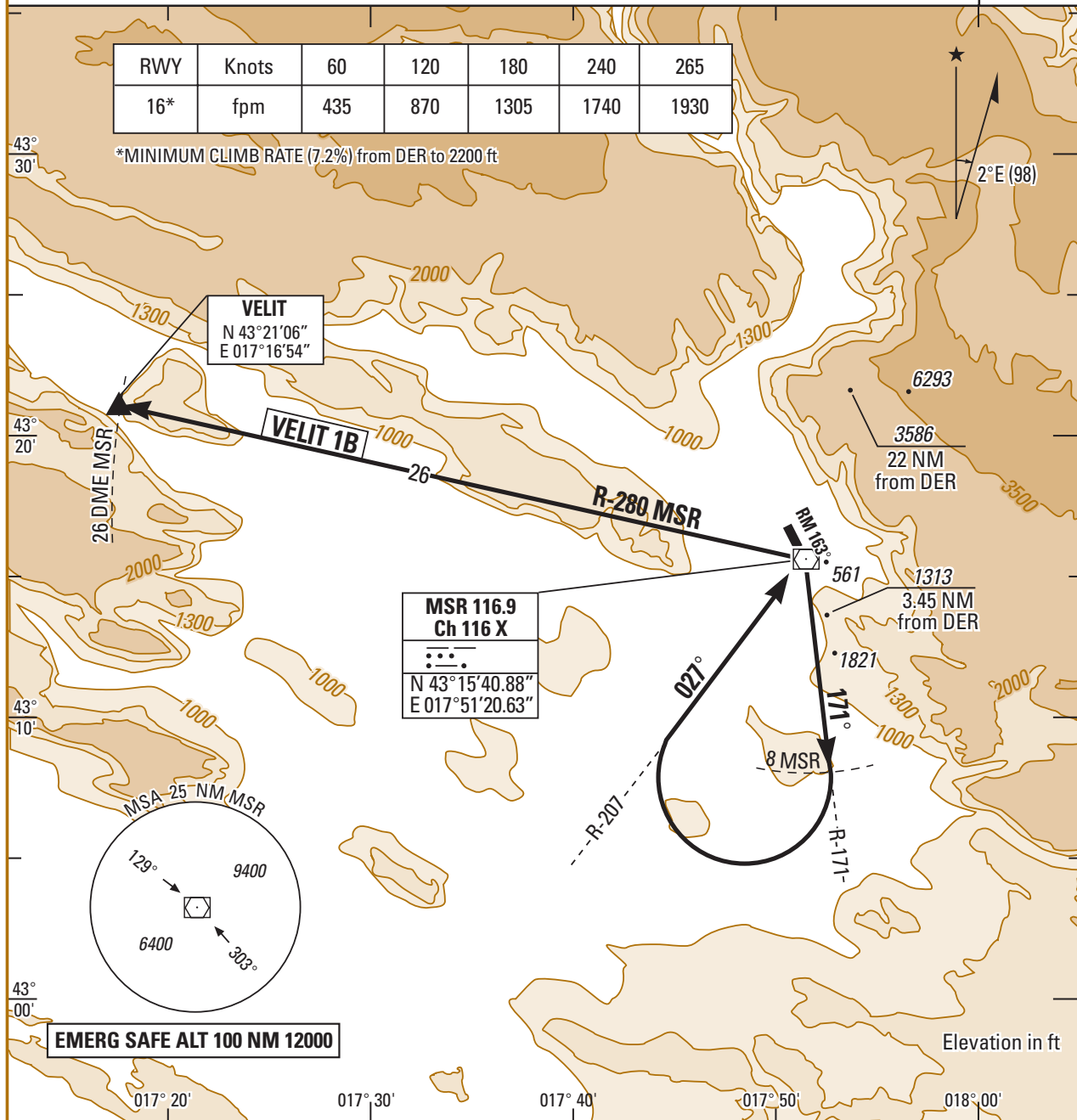
VELIT 1B RWY 16

MOSTAR APP 122.700 119.825 318.200  
 MOSTAR TWR 122.350 118.225 257.800 297.900

TA : 9500

RWY	Knots	60	120	180	240	265
16*	fpm	435	870	1305	1740	1930

\*MINIMUM CLIMB RATE (7.2%) from DER to 2200 ft



## SID

## DEPARTURE ROUTE DESCRIPTION

VELIT 1B  
(RWY 16)

- After DER, climb\* on RM 163° then MSR R-171
- \*Minimums climb rate : 7.2% from DER to 2200 ft
- At 8 DME , turn right to intercept MSR R - 207 inbound direct to MSR.
- Over MSR, turn left to intercept MSR R - 280 direct to VELIT
- Then as directed by ATC.