

STANDARD INSTRUMENT DEPARTURE CHART

CAT. A B C

APT EL : 156

01 FEB 03

1.17 MOSTAR (LQMO)

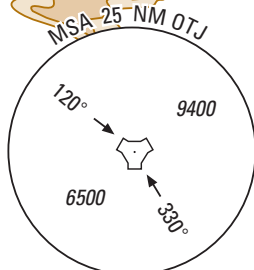
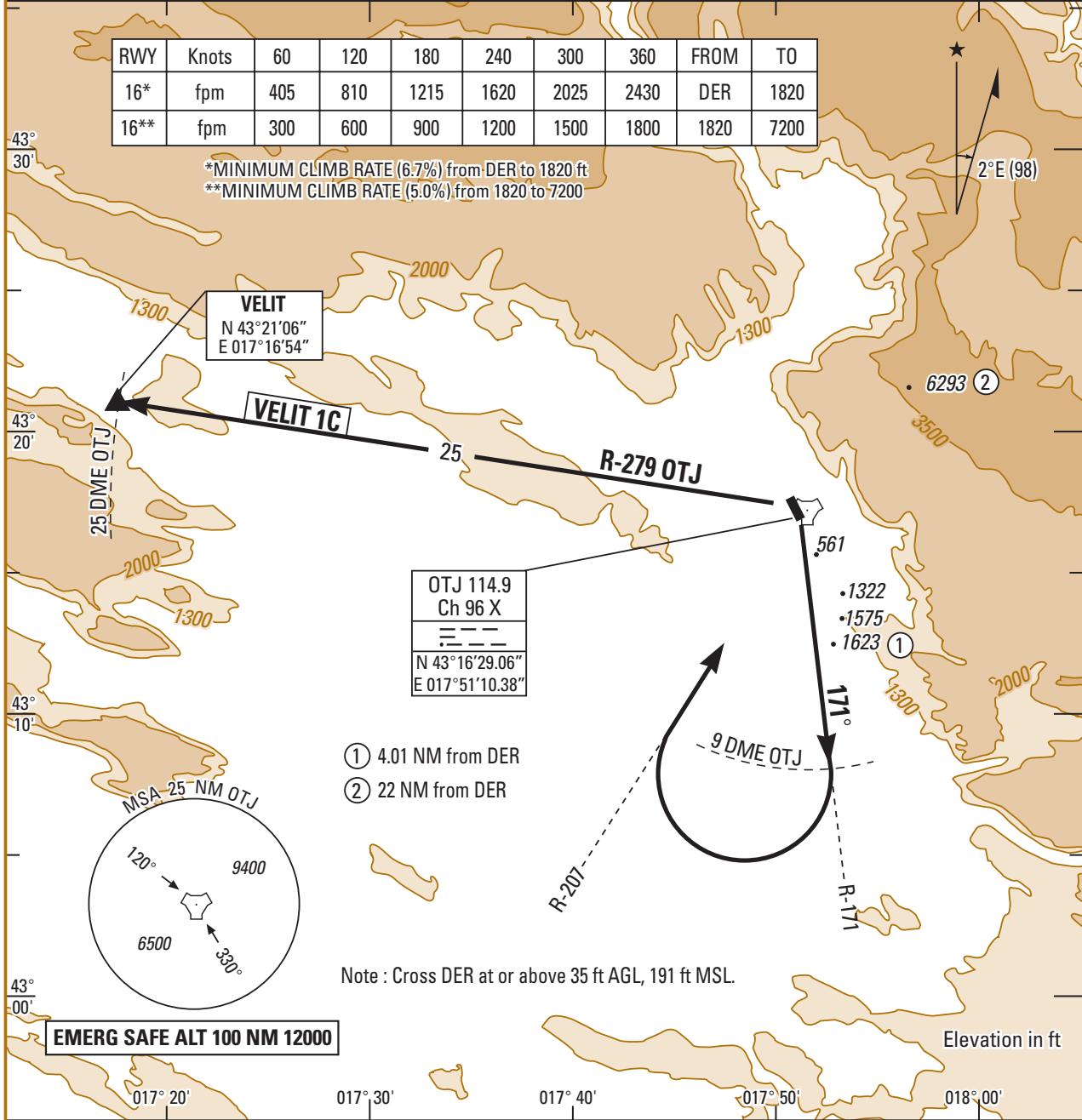
VELIT 1C RWY 16

MOSTAR APP 122.700 119.825 318.200
 MOSTAR TWR 122.350 118.225 257.800 297.900

TA : 9500

RWY	Knots	60	120	180	240	300	360	FROM	TO
16*	fpm	405	810	1215	1620	2025	2430	DER	1820
16**	fpm	300	600	900	1200	1500	1800	1820	7200

*MINIMUM CLIMB RATE (6.7%) from DER to 1820 ft
 **MINIMUM CLIMB RATE (5.0%) from 1820 to 7200



EMERG SAFE ALT 100 NM 12000

SID	DEPARTURE ROUTE DESCRIPTION
VELIT 1C (RWY 16)	<ul style="list-style-type: none"> - Climb on OTJ R-171 to 9 DME - At 9 DME , turn right to intercept R - 207 inbound direct to OTJ. - Turn left to intercept R - 279 direct to VELIT - Then as directed by ATC