

STANDARD INSTRUMENT DEPARTURE CHART

CAT. A B C

APT EL : 156

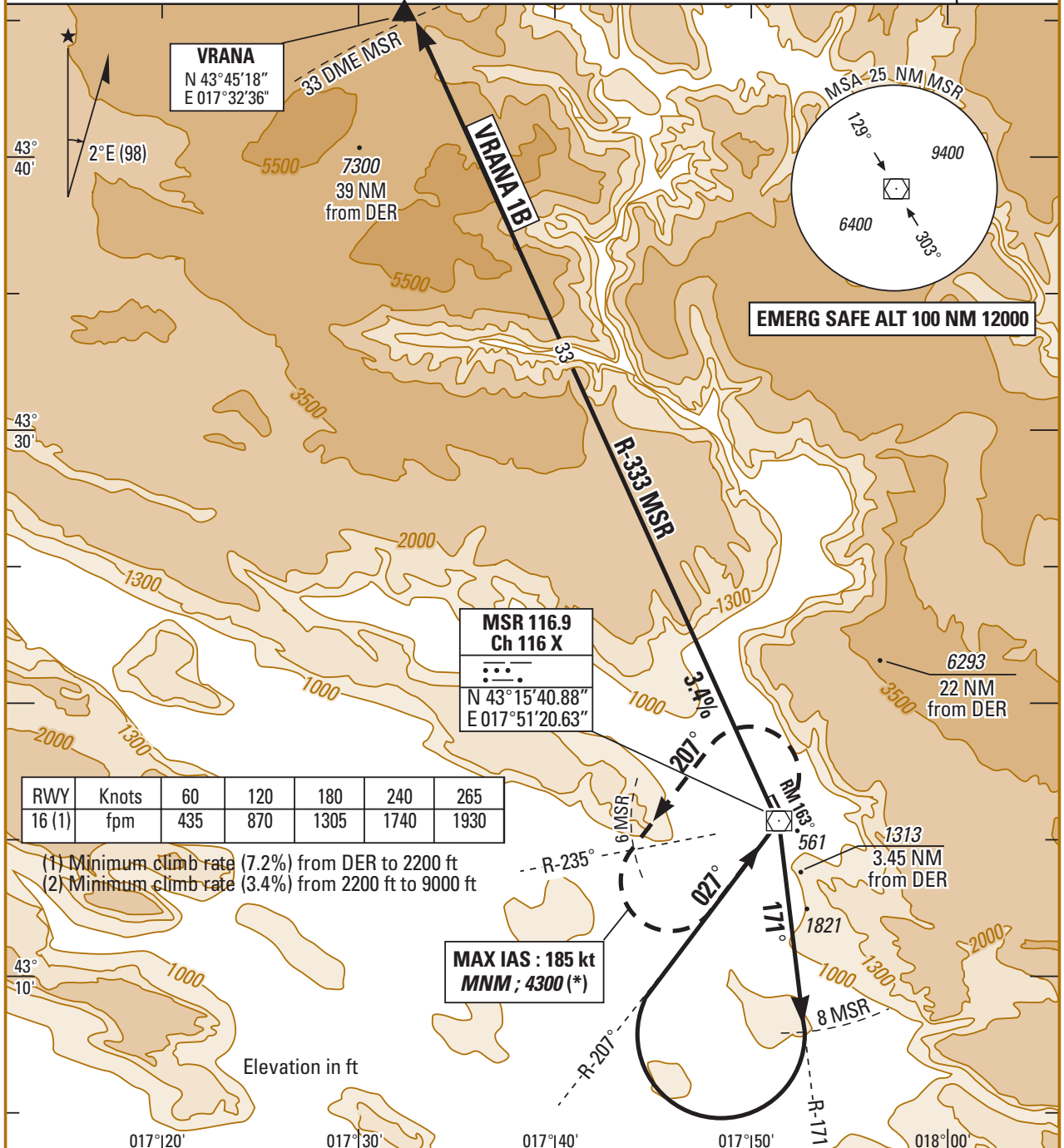
01 FEB 03

1.18 MOSTAR (LQMO)

VRANA 1B RWY 16

MOSTAR APP 122.700 119.825 318.200
 MOSTAR TWR 122.350 118.225 257.800 297.900

TA : 9500



SID	DEPARTURE ROUTE DESCRIPTION
VRANA 1B (RWY 16)	<ul style="list-style-type: none"> - After DER, climb (1) RM 163, then MSR R-171. - At 8 DME , turn right to intercept MSR R-207 inbound direct to MSR. - Over MSR, turn left to intercept MSR R-333 direct to VRANA - Then as directed by ATC <p>(1) Minimum climb rate 7.2% from DER to 2200 ft then 3.4% until 9000 ft (*)</p> <p>(*) Rescue pattern climb : Over 2200 ft, if minimum climb rate not possible above 2200 ft, climb standard rate (3.3%) until MSR, then climb in holding pattern. At 9000 ft direct to VRANA. Separation with arrivals and holdings patterns not guaranteed.</p>