

# STANDARD INSTRUMENT DEPARTURE CHART

CAT. A B C

APT EL : 156

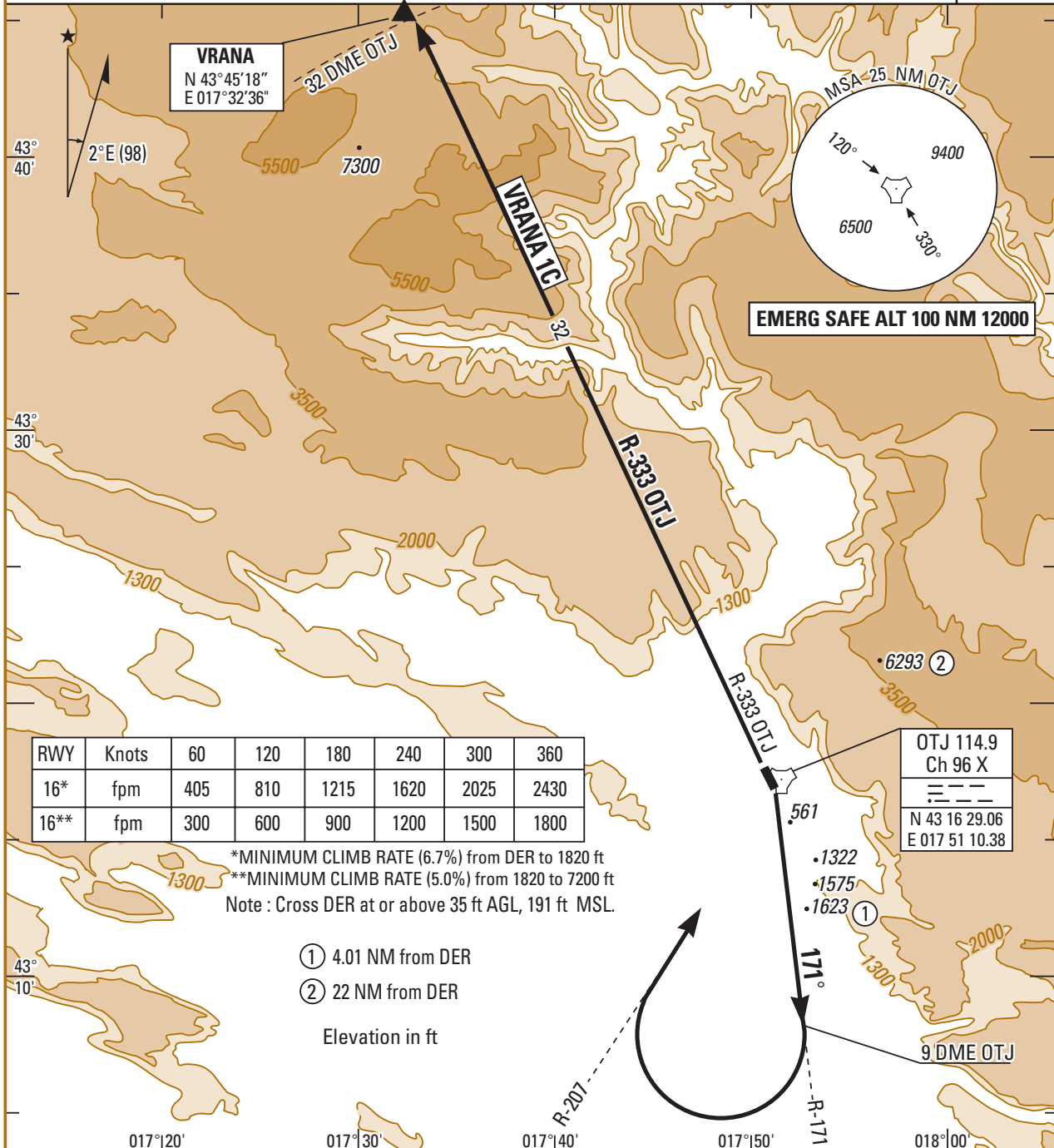
01 FEB 03

1.19 MOSTAR (LQMO)

VRANA 1C RWY 16

MOSTAR APP 122.700 119.825 318.200  
 MOSTAR TWR 122.350 118.225 257.800 297.900

TA : 9500



EMERG SAFE ALT 100 NM 12000

OTJ 114.9  
 Ch 96 X  
 N 43 16 29.06  
 E 017 51 10.38

SID

DEPARTURE ROUTE DESCRIPTION

VRANA 1C  
 (RWY 16)

- Climb on OTJ R-171 to 9 DME
- At 9 DME , turn right to intercept R - 207 inbound direct to OTJ.
- Turn left to intercept R - 333 direct to VRANA
- Then as directed by ATC