

STANDARD INSTRUMENT DEPARTURE CHART CAT. A B C D

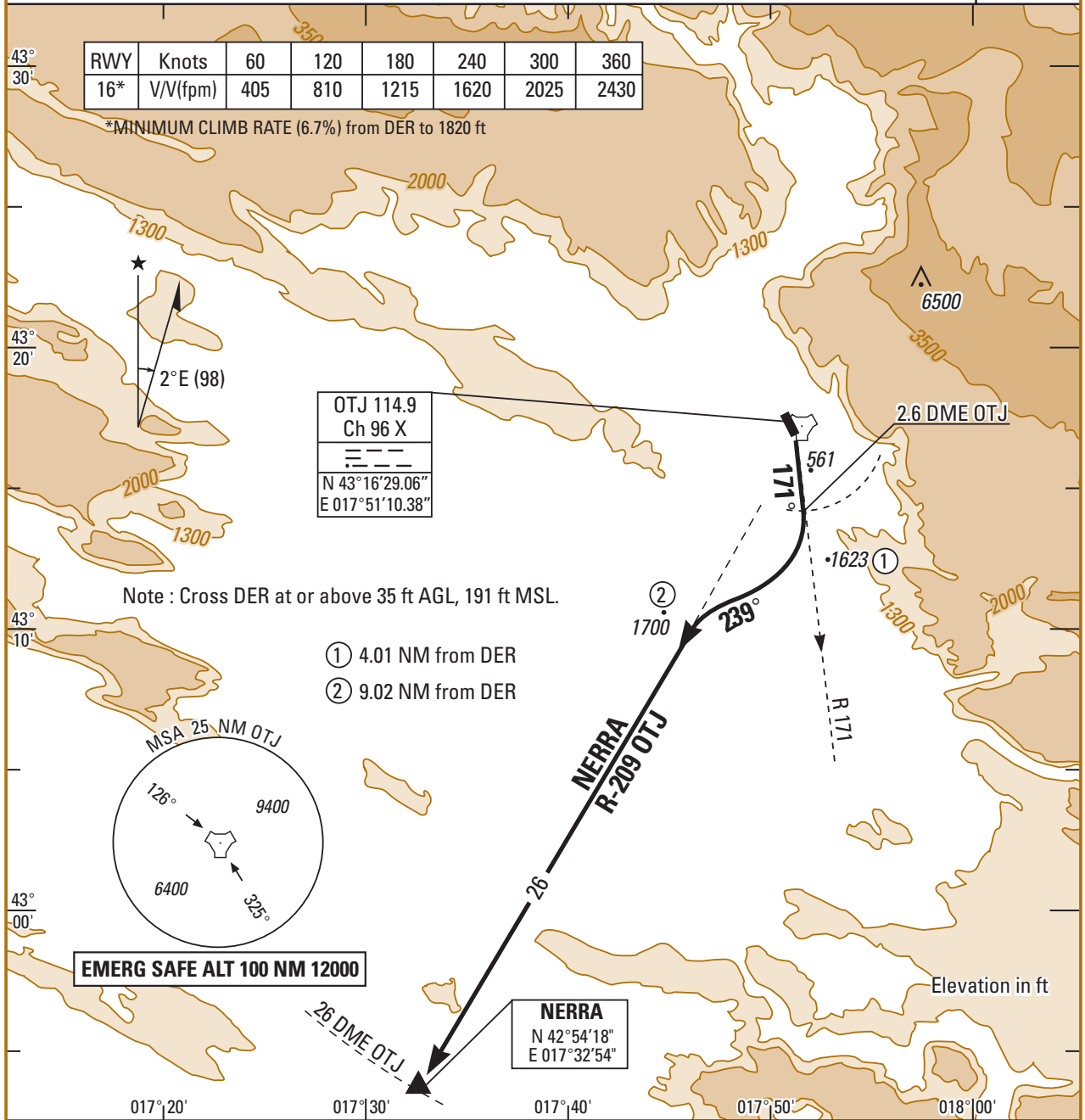
APTEL : 156

01 FEB 03

**1.20 MOSTAR (LQMO)
NERRA 1 RWY 16**

MOSTAR APP 122.700 119.825 318.200
MOSTAR TWR 122.350 118.225 257.800 297.900

TA : 9500



SID	DEPARTURE ROUTE DESCRIPTION
NERRA 1 (RWY 16)	<ul style="list-style-type: none"> - Climb on OTJ R-171 - At 2.6 DME , turn right on track 239° - Intercept OTJ R - 209 outbound direct to NERRA - Then as directed by ATC