

INSTRUMENT APPROACH

CAT. A B C D

APT EL : 1708, THR : 1643

01 FEB 03

2.05 SARAJEVO (LOSA)

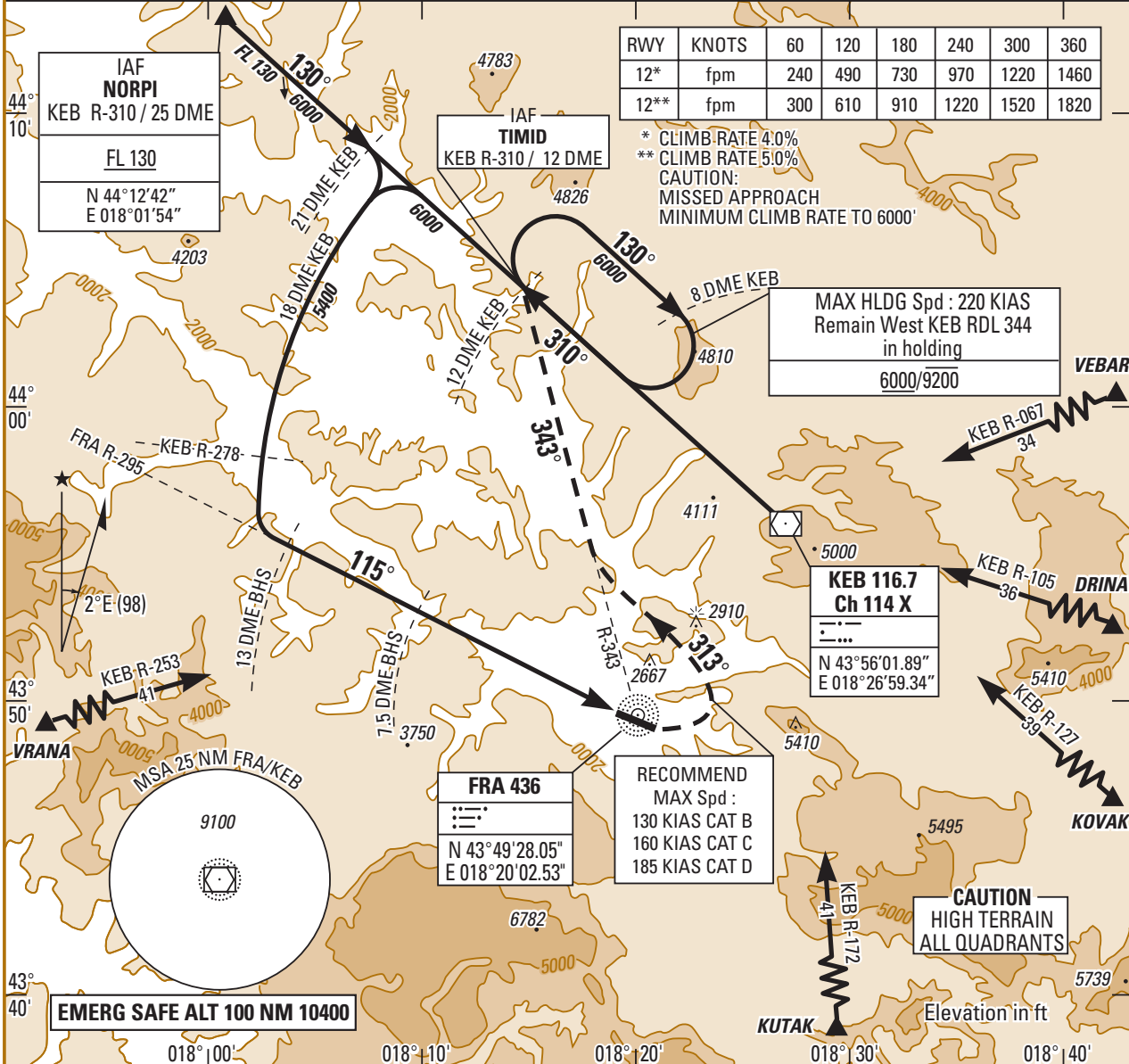
VOR/DME ILS RWY 12

VOR/DME LLZ RWY 12

MISSED APPROACH 4.0% 5.0%

APP : 123.550
TWR : 118.250
GND : 122.100

ILS BHS 110.7
DME Ch 44X
GP 330.2
TCH : 50
GLIDE PATH 3.2°



RWY	KNOTS	60	120	180	240	300	360
12*	fpm	240	490	730	970	1220	1460
12**	fpm	300	610	910	1220	1520	1820

* CLIMB RATE 4.0%
** CLIMB RATE 5.0%
CAUTION:
MISSED APPROACH
MINIMUM CLIMB RATE TO 6000'

MAX HLDG Spd : 220 KIAS
Remain West KEB RDL 344
in holding
6000/9200

KEB 116.7
Ch 114 X
N 43°56'01.89"
E 018°26'59.34"

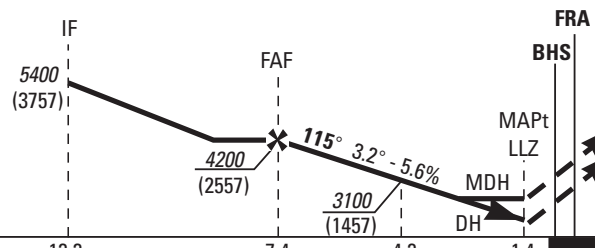
FRA 436
N 43°49'28.05"
E 018°20'02.53"

RECOMMEND
MAX Spd :
130 KIAS CAT B
160 KIAS CAT C
185 KIAS CAT D

CAUTION
HIGH TERRAIN
ALL QUADRANTS
Elevation in ft

EMERG SAFE ALT 100 NM 10400

TA : 9500



MISSED APPROACH:
Climb on heading 115° to 6000 (4357).
Crossing 2750 (1107) turn LEFT on track 313° intercept FRA 343° direct TIMID and hold. Do NOT TURN before MAPT.

THR → (NM)	12.2	7.4	4.2	1.4
BHS → (NM)	13	7.5	4.3	1.5

MDH / DH published in feet RVR in meters.

QFE based on THR

REF Elev : ALT THR

CAT	ILS MISSED APP 4.0%		LOC MISSED APP 4.0%		ILS MISSED APP 5.0%		LOC MISSED APP 5.0%		ILS 4.0% OCH	ILS 5.0% OCH	CIRCLING (1)		(1) CIRCLING : - North of AD only - Night not authorized
	DH	RVR	MDH	RVR	DH	RVR	MDH	RVR			MDH	VIS	
A	540	800	660	1200	450	800	660	800	A : 537	A : 445	950	1900	
B	590	800	660	1400	510	800	660	1000	B : 587	B : 501	1260	2800	
C	710	800	770	1400	600	800	660	1200	C : 710	C : 595	3400	3700	
D	800	800	930	1800	740	800	880	1800	D : 797	D : 735	4170	4600	

ICAO

CHG : Fréquence.

VOR/DME ILS RWY 12 ©
VOR/DME LLZ RWY 12
MISSED APPROACH 4.0% 5.0%