

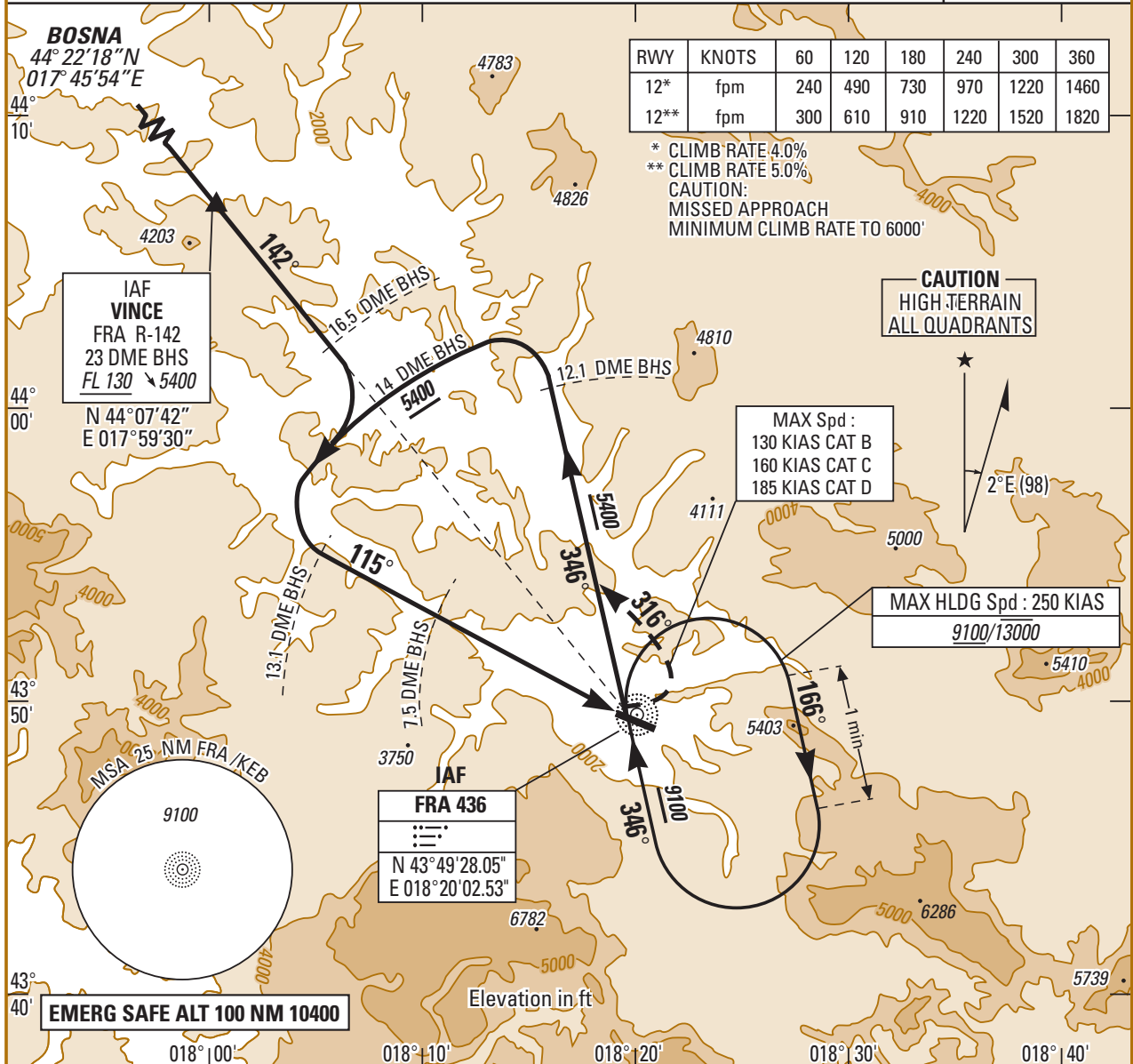
INSTRUMENT APPROACH CAT. A B C D

APT EL : 1708, TDZE : 1643

01 FEB 03

2.07 SARAJEVO (LOSA) NDB/DME ILS RWY 12 NDB/DME LLZ RWY 12 MISSED APPROACH 4.0% 5.0%

APP : 123.550	TWR : 118.250	GND : 122.100	ILS BHS 110.7 DME Ch 44X GP 330.2 TCH : 50 GLIDE PATH 3.2°
---------------	---------------	---------------	--



RWY	KNOTS	60	120	180	240	300	360
12*	fpm	240	490	730	970	1220	1460
12**	fpm	300	610	910	1220	1520	1820

* CLIMB RATE 4.0%
** CLIMB RATE 5.0%
CAUTION:
MISSED APPROACH
MINIMUM CLIMB RATE TO 6000'

CAUTION
HIGH TERRAIN
ALL QUADRANTS

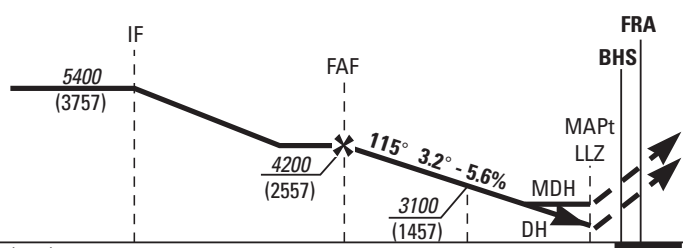
MAX Spd :
130 KIAS CAT B
160 KIAS CAT C
185 KIAS CAT D

MAX HLDG Spd : 250 KIAS
9100/13000

IAF FRA 436
N 43° 49' 28.05"
E 018° 20' 02.53"

EMERG SAFE ALT 100 NM 10400

TA : 9500



MISSED APPROACH:
Climb on heading **115°** to **6000** (4357).
Crossing **2750** (1107) turn **LEFT** on
track **316°** intercept **FRA 346°**
and follow ATC clearance.
Do **NOT TURN** before **MAPt**.

THR → (NM)	12.9	7.4	4.2	1.4
BHS → (NM)	13	7.5	4.3	1.5

CAT	ILS MISSED APP 4.0%				LZZ MISSED APP 4.0%				ILS MISSED APP 5.0%				LZZ MISSED APP 5.0%				ILS 4.0% OCH	ILS 5.0% OCH	CIRCLING (1)		(1) CIRCLING : - North of AD only - Night not authorized
	DH		RVR		MDH		RVR		DH		RVR		MDH		RVR				MDH	VIS	
	DH	RVR	MDH	RVR	DH	RVR	MDH	RVR	DH	RVR	MDH	RVR	DH	RVR	DH	RVR					
A	540	800	660	1200	450	800	660	1200	A : 537	A : 445	950	1900									
B	590	800	660	1400	510	800	660	1400	B : 587	B : 501	1260	2800									
C	710	800	770	1400	600	800	660	1400	C : 710	C : 595	3400	3700									
D	800	800	930	1800	740	800	880	1800	D : 797	D : 735	4170	4600									

ICAO

CHG : First edition.

**NDB/DME ILS RWY 12 ©
NDB/DME LLZ RWY 12
MISSED APPROACH 4.0% 5.0%**