

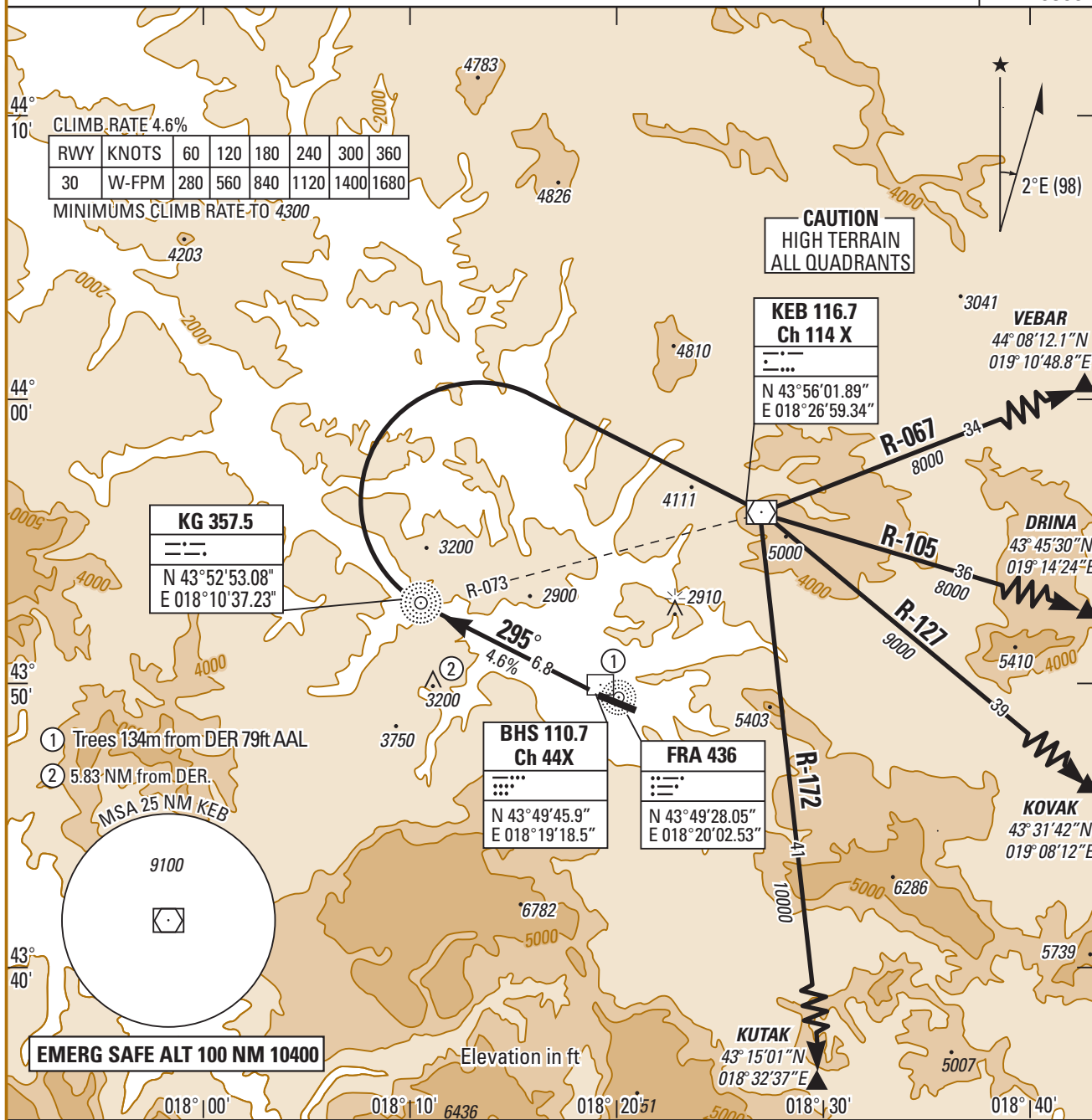
**INSTRUMENT DEPARTURE**  
**CAT. A B C D**  
**APT EL : 1708**

**2.12 SARAJEVO (LOSA)**  
**VEBAR/DRINA/KOVAK/KUTAK 1A RWY 30**

01 FEB 03

APP : 123.550  
 TWR : 118.250  
 GND : 122.100

TA : 9500



**SID**

**DEPARTURE ROUTE DESCRIPTION**

**VEBAR/DRINA/  
 KOVAK/KUTAK 1A  
 (RWY 30)**

Climb direct KG (1).  
 Over KG turn right direct to KEB (2), then as cleared by ATC.

(1) Minimums climb rate 4.6% from DER to 4300 ft.  
 The minimums slope gradient disregards the trees at 134m from DER and 134m North of RWY centreline, altitude 1722ft (79ft AAL).

(2) Cross KEB at or above 6000 ft.