

INSTRUMENT DEPARTURE

CAT. A B C D

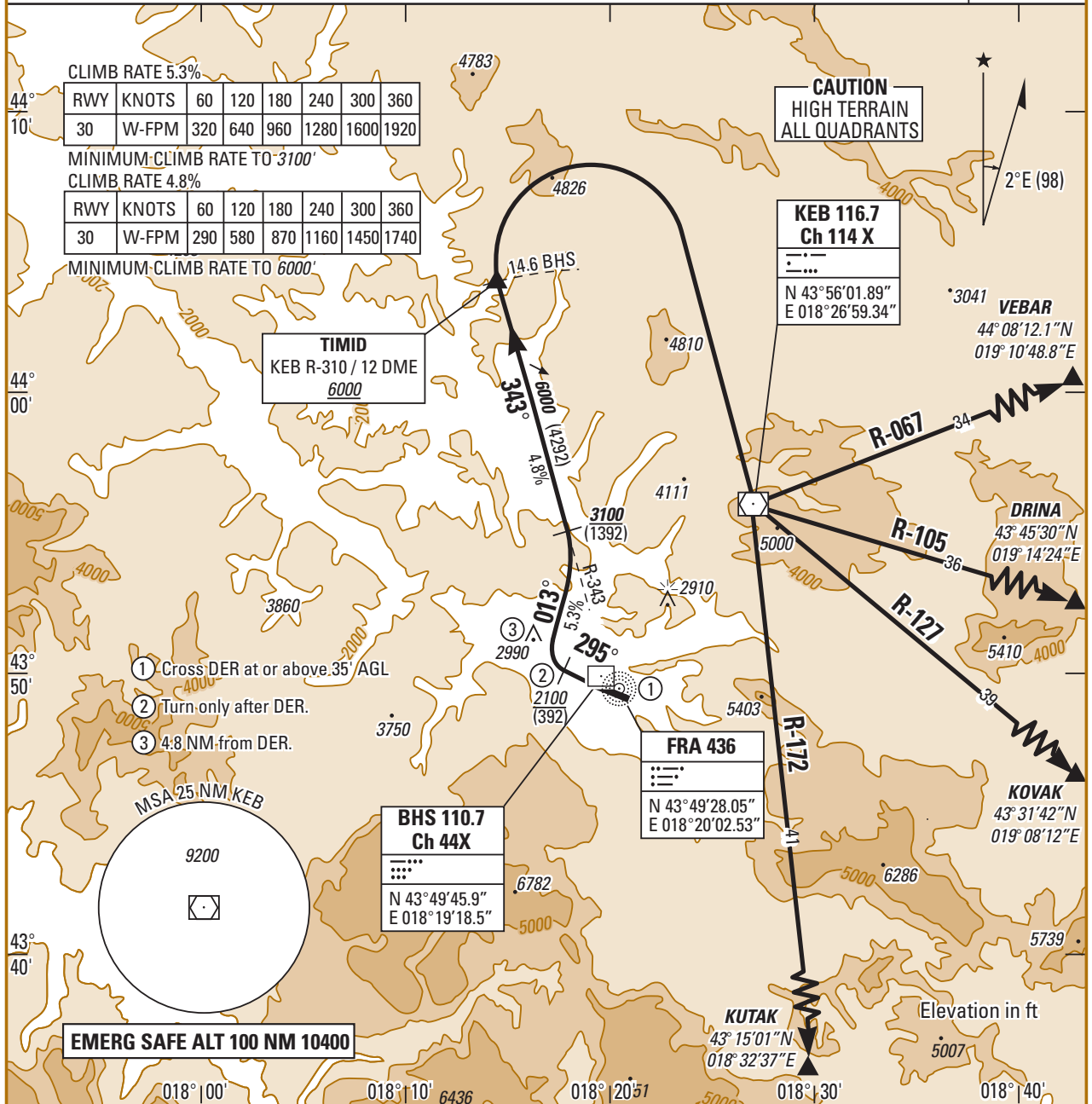
APT EL : 1708

01 FEB 03

2.13 SARAJEVO (LOSA) VEBAR/DRINA/KOVAK/KUTAK 2E RWY 30

APP : 123.550
TWR : 118.250
GND : 122.100

TA : 9500



SID	DEPARTURE ROUTE DESCRIPTION
<p>VENAR/DRINA/ KOVAK/KUTAK 2E (RWY 30)</p>	<p>Climb on RWY heading. After DER, when passing 2100 ft turn right on track 013° to intercept FRA course 343 direct TIMID. Cross TIMID at or above 6000 ft and turn right KEB. Then as cleared by ATC.</p>